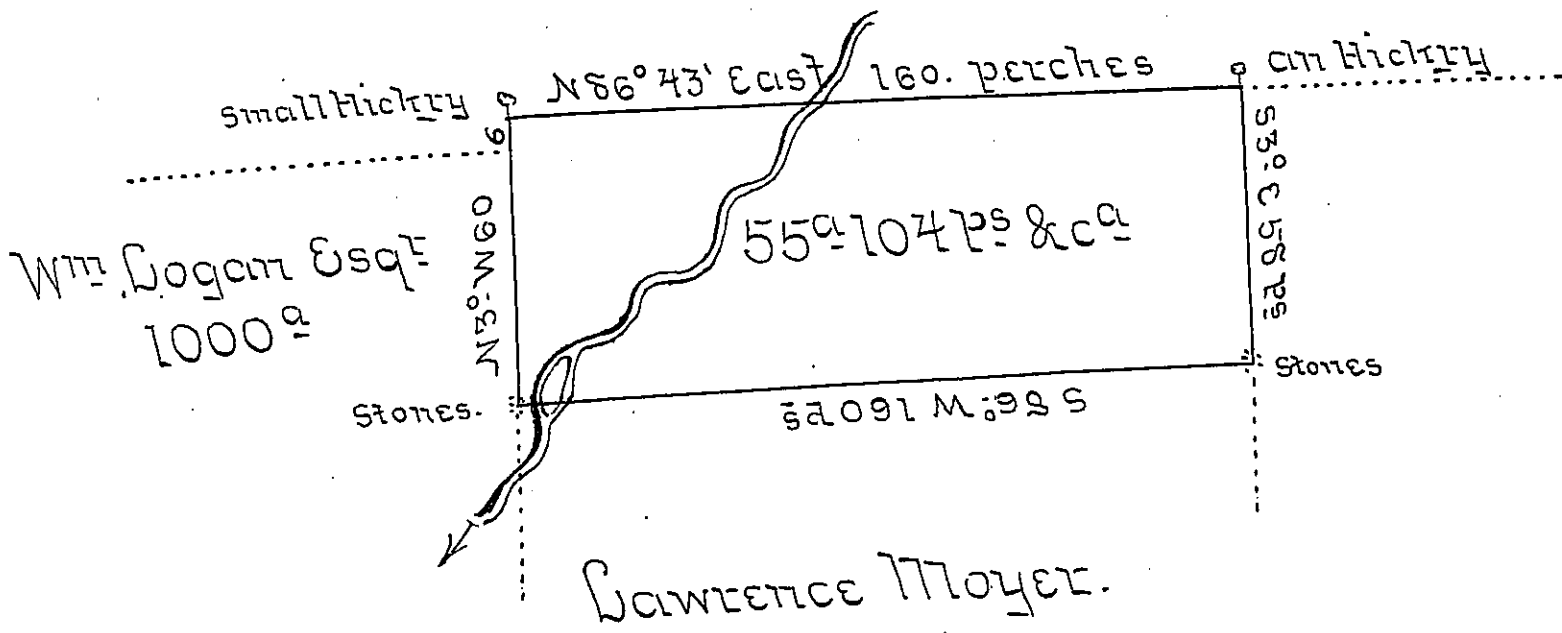


Lottery Land.



A Draught of 55^a 104 Perches of Land ~~in the~~ and Allowance of 6 percent, situate in or near Springfield in Bucks County, Surveyed to Samuel Adon the 6th of September 1758 in Virtue of a Warrant of the 14. of ~~the 1st of August 1758.~~ August 1758.

By J^{no}. Watson Jun^r

IN TESTIMONY that the above is a copy of the original remaining on file in the Department of Internal Affairs of Pennsylvania, made conformably to an Act of Assembly approved the 16th day of February, 1833, I have hereunto set my Hand and caused the Seal of said Department to be affixed at Harrisburg, this thirtieth day of August 1904.

George P. Brown
Secretary of Internal Affairs.